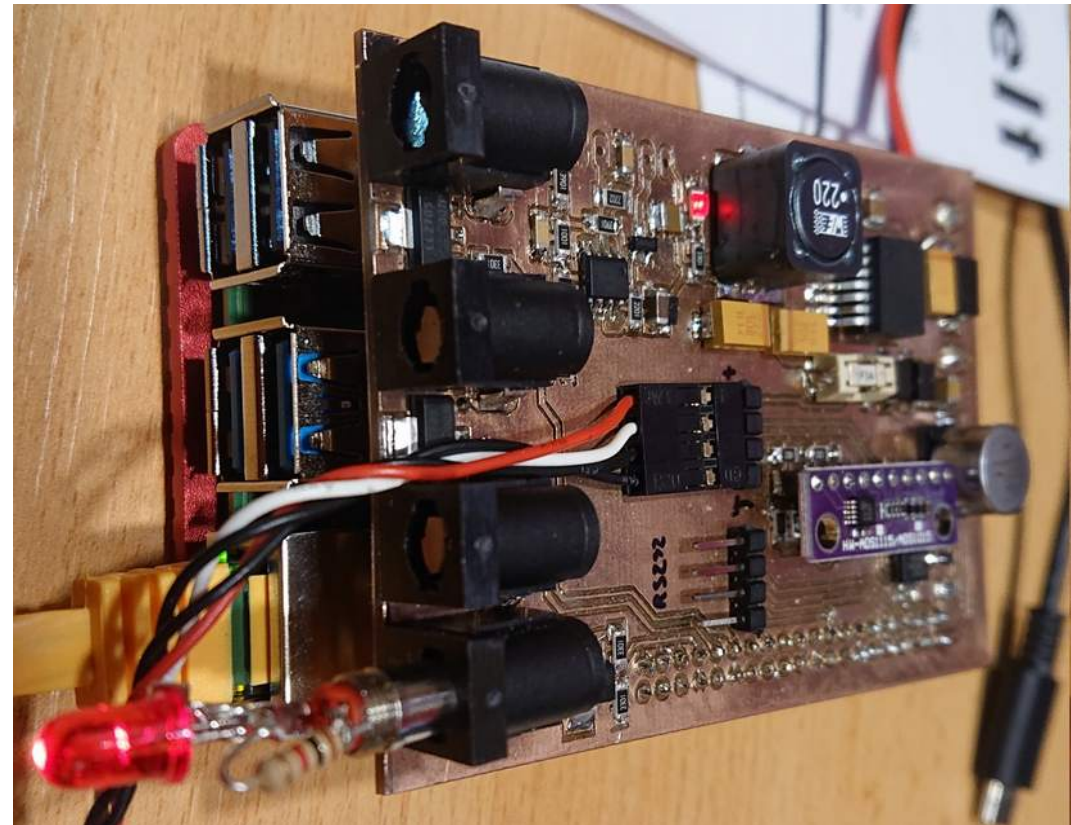
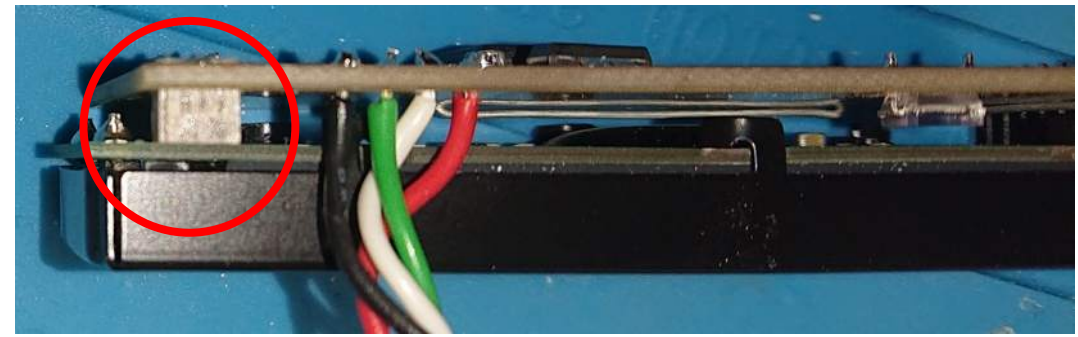
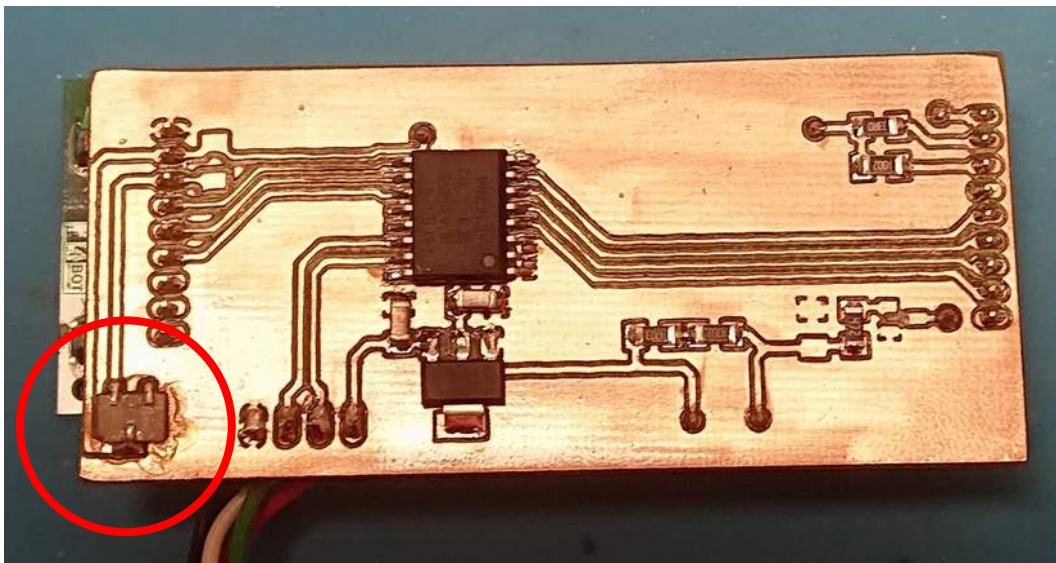


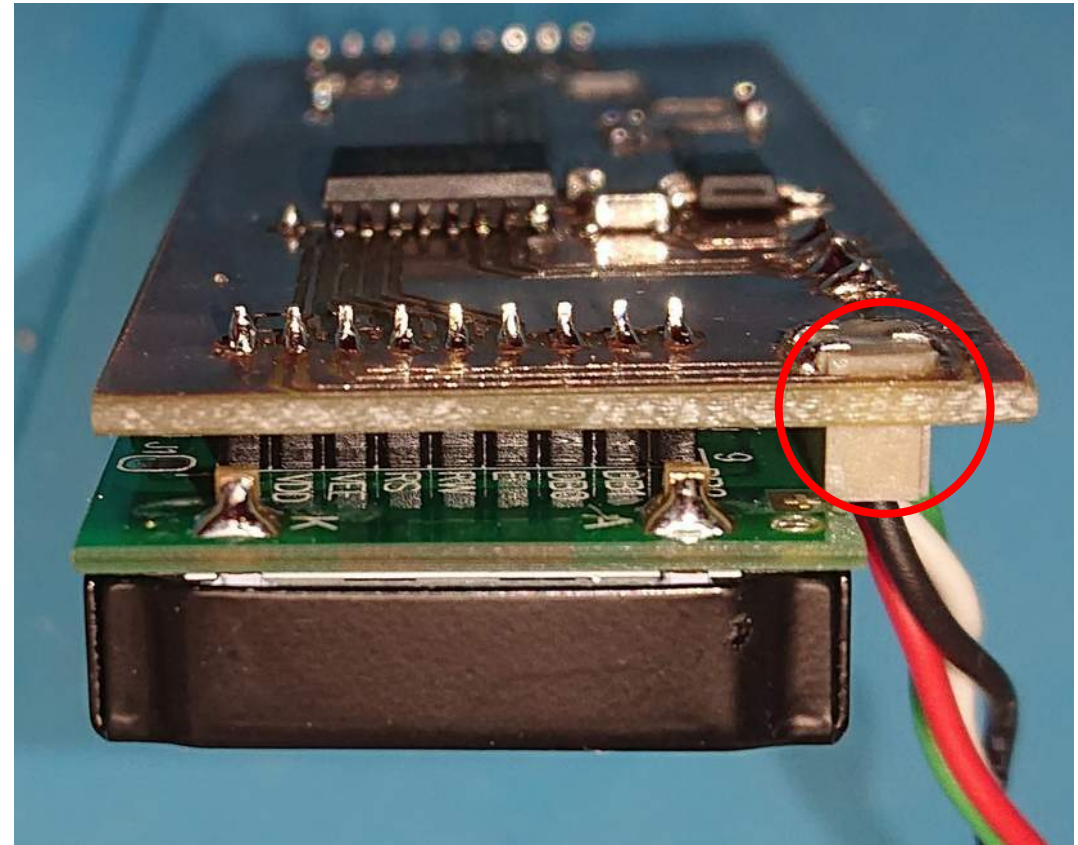
AstroRaspi4 Version2
Prototyp 1 - Aufsatzplatine
1x Dauerplus + 3x NF PWM Kanäle

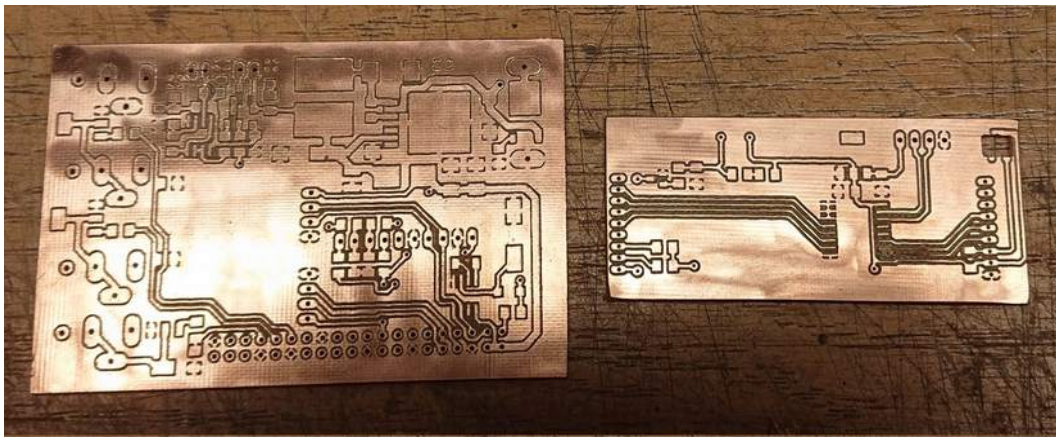




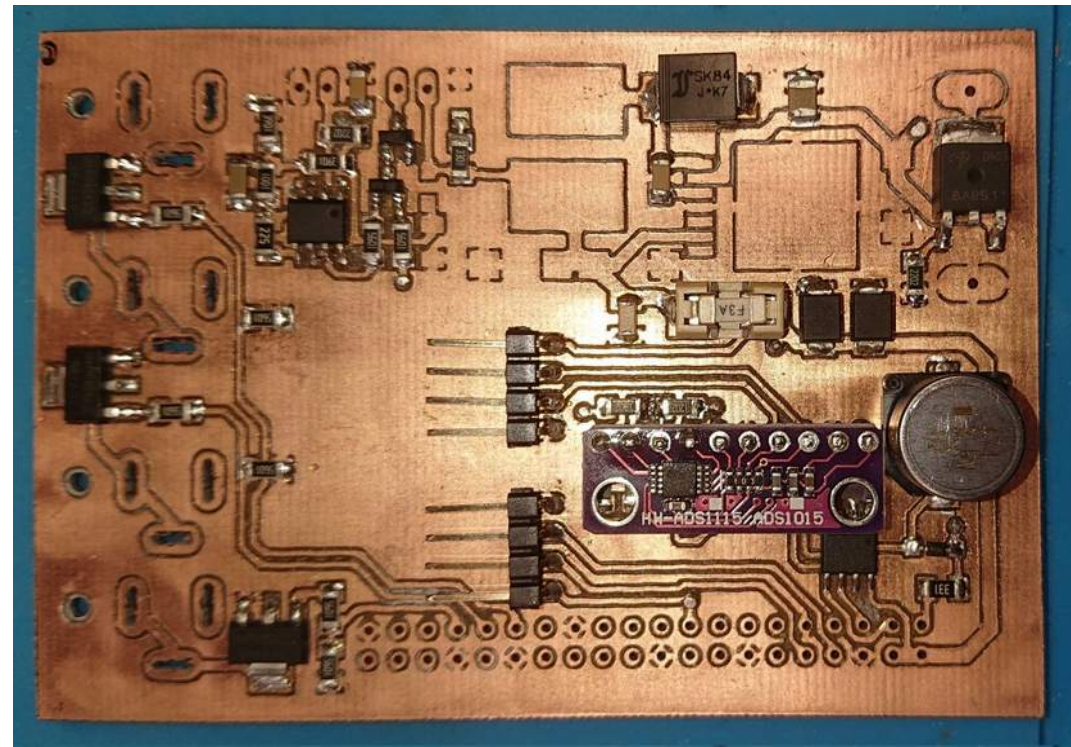
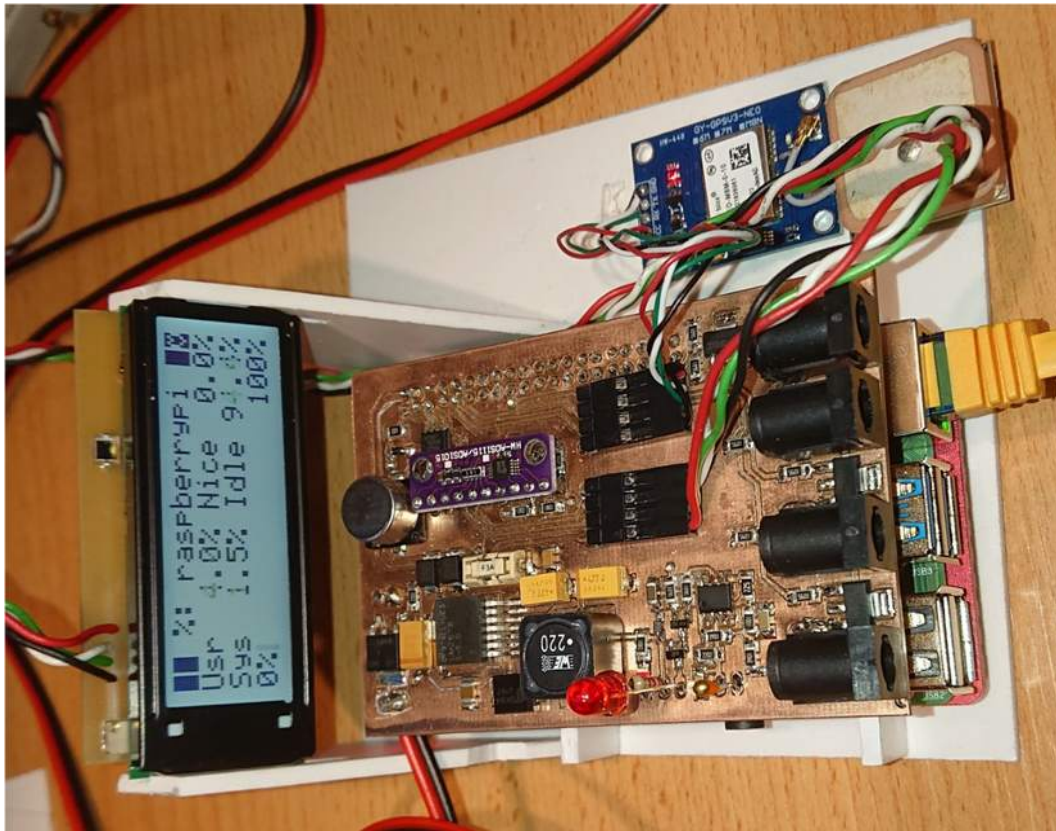
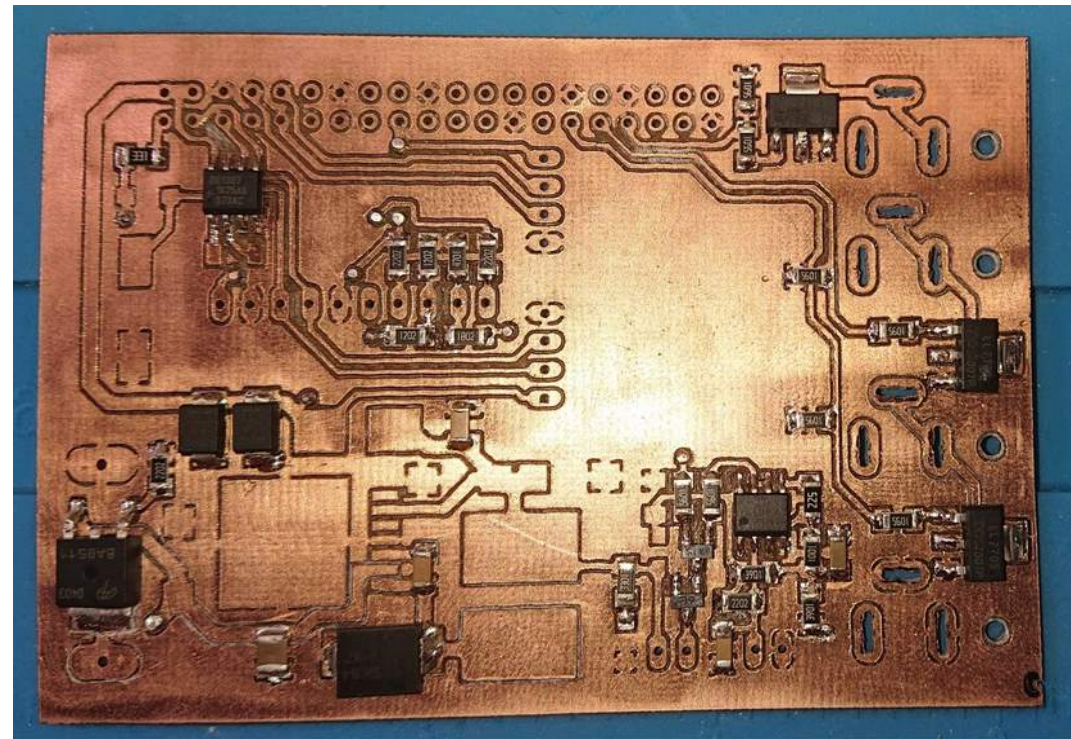
Astrorasp Pi4 Version 2 LCD-Display

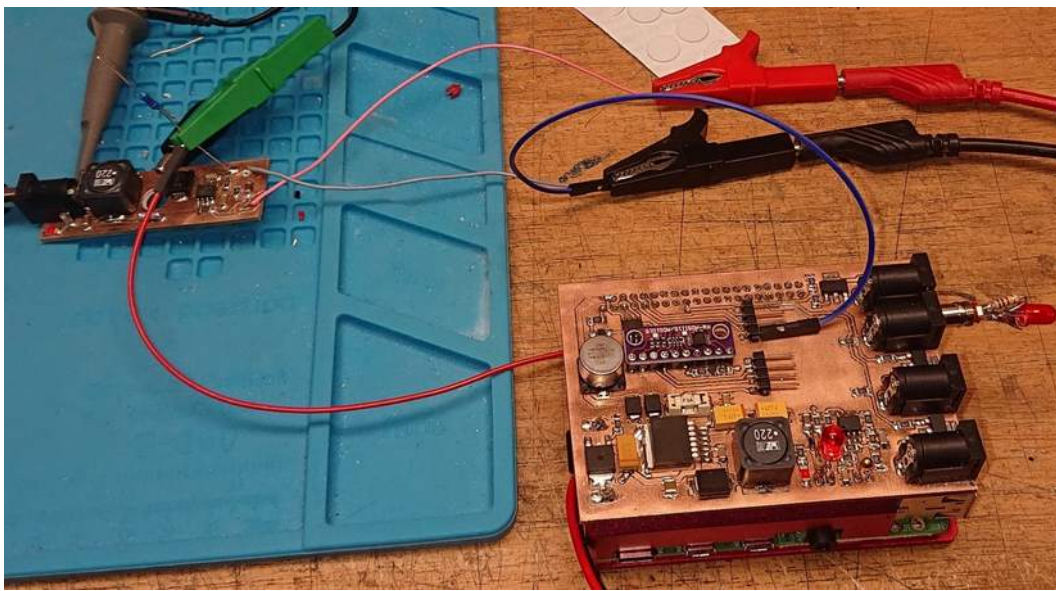
SMD-Trimmer individuell eingebaut wg. Platz



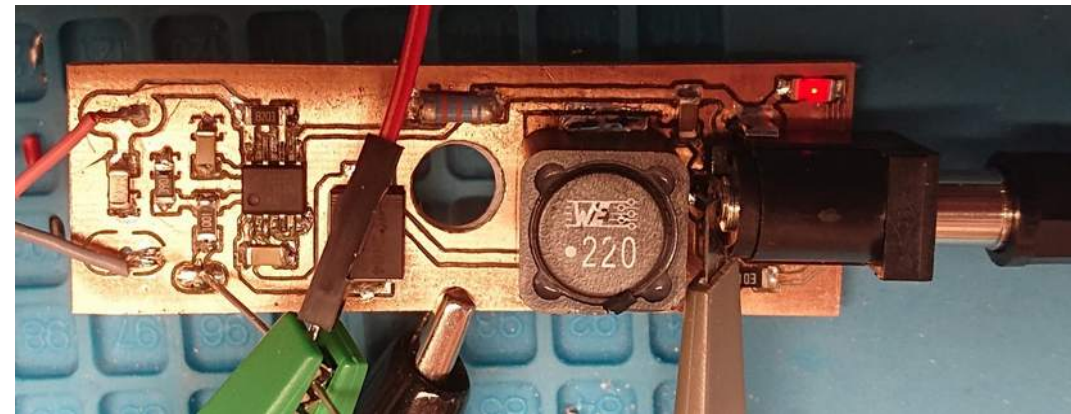
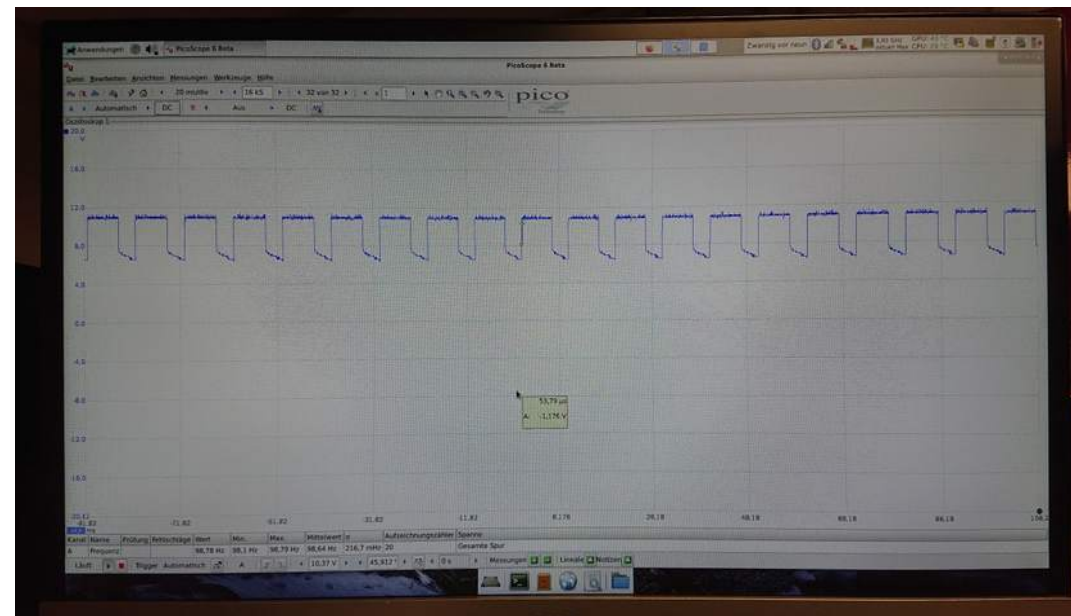


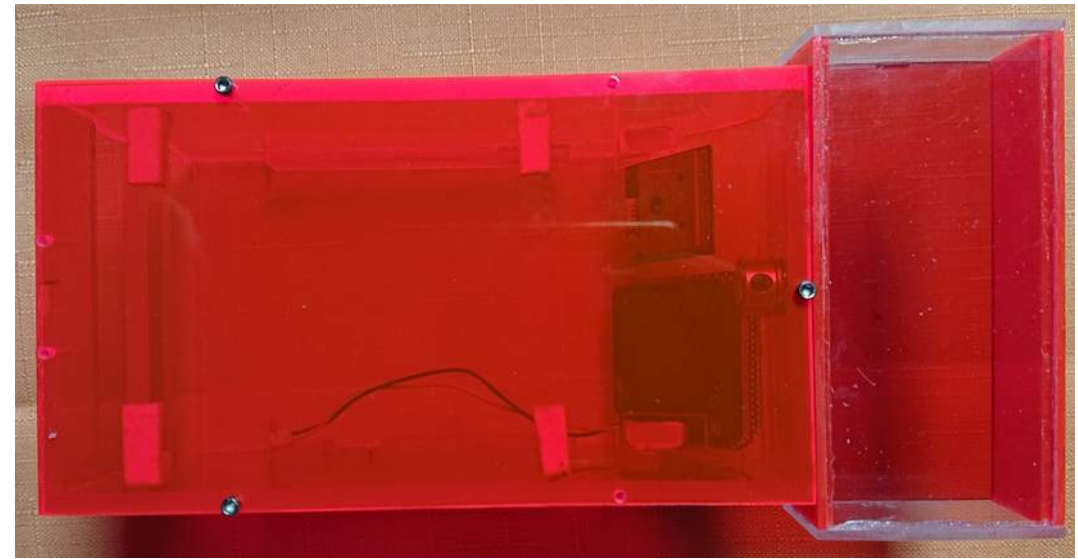
Astrorasp Pi 4 Version 2
Aufsatzplatine + LCD
Bestückung + Test Prototype 2





Astrorasp4 Version2
Steuerung Flatfieldversorgung
Mit LM3404 - ungeeignet



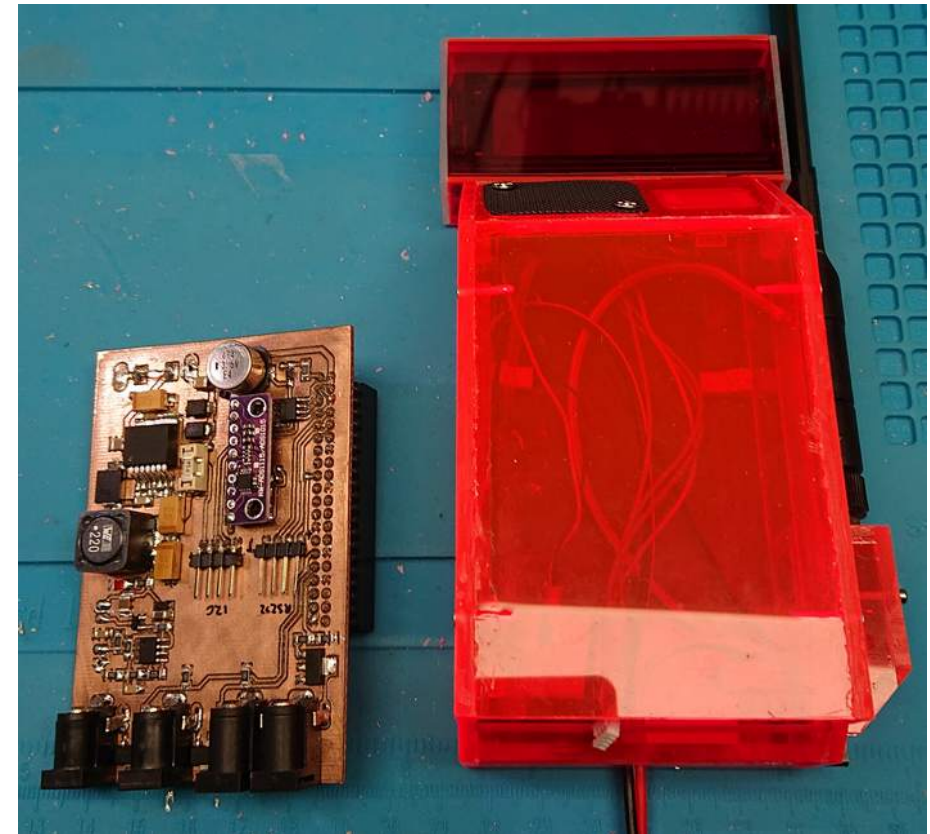
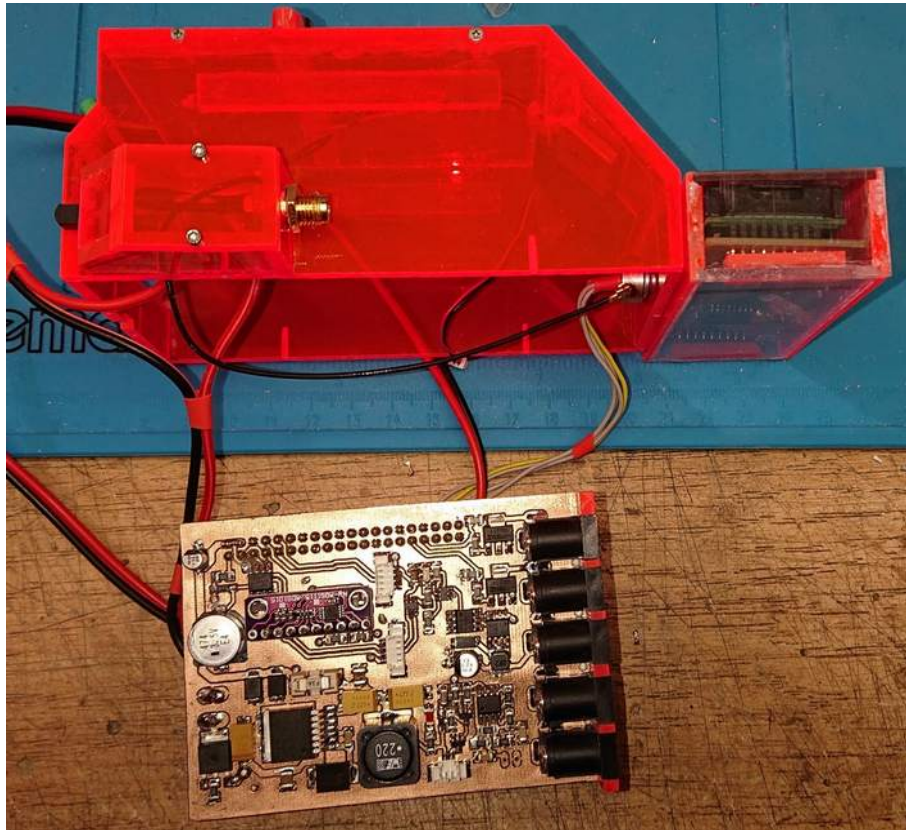


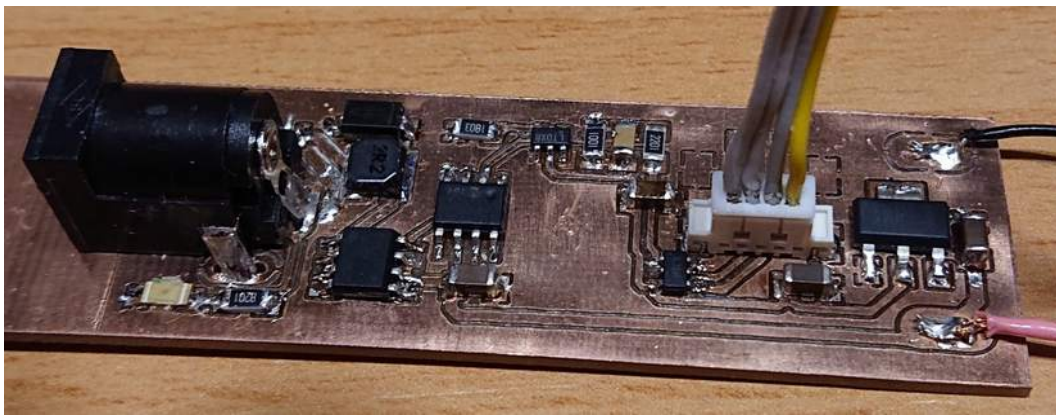
Astroraspi4 Version2

Gehäuse im Bau

Rotes Acrylglas

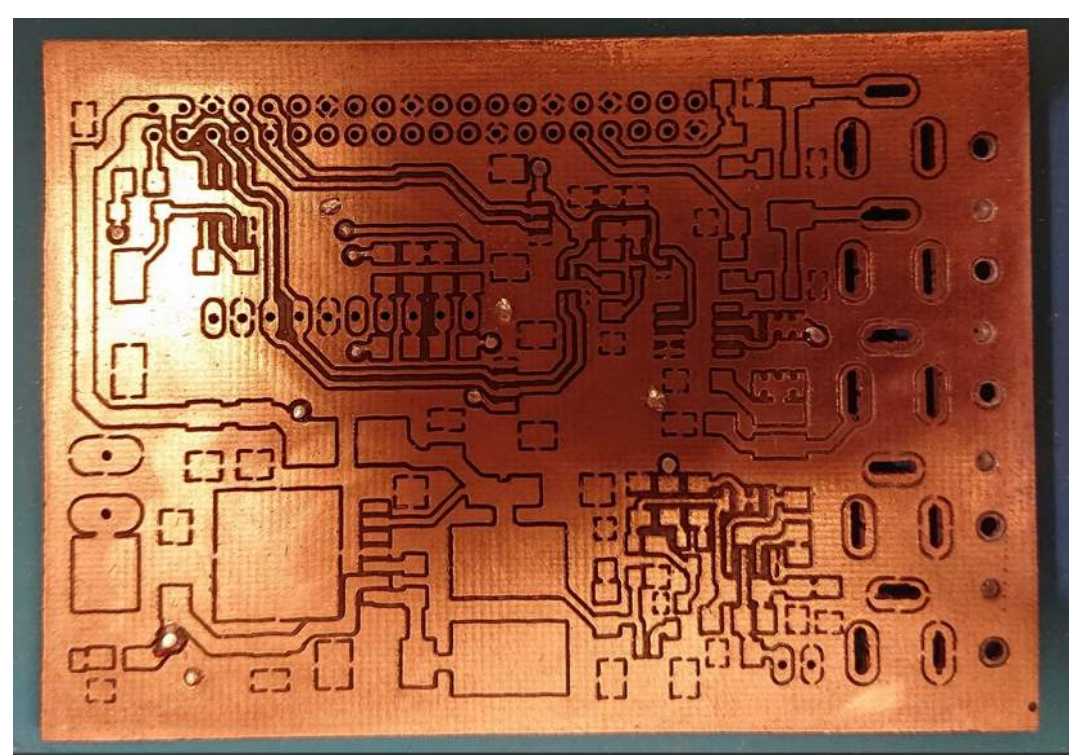
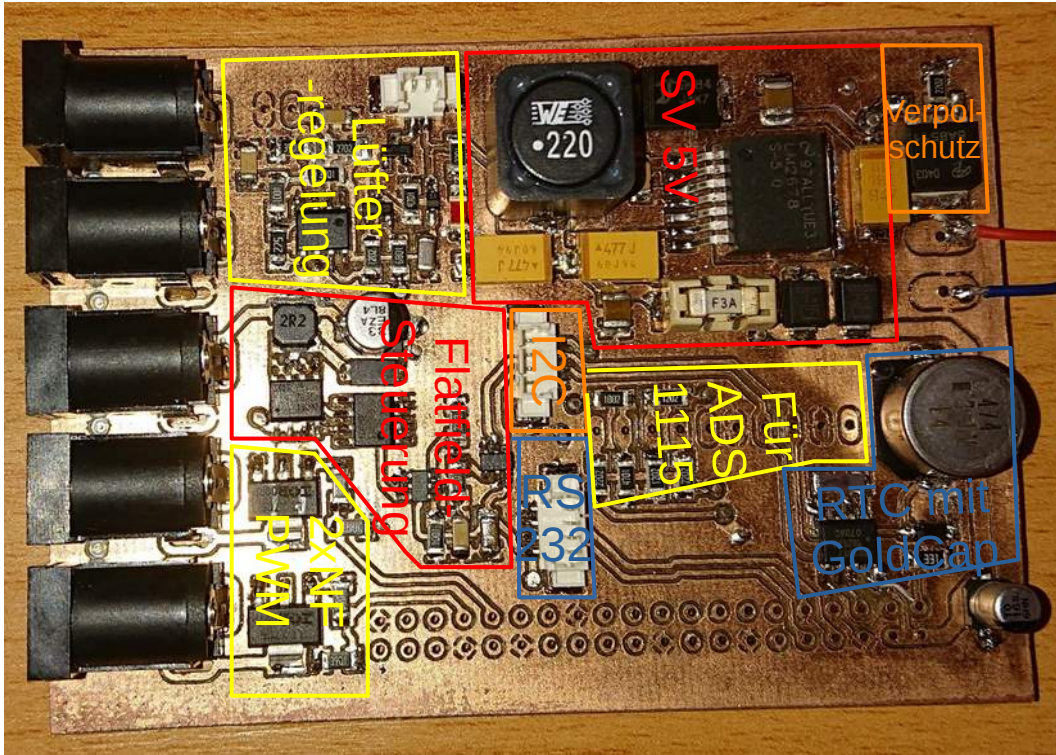
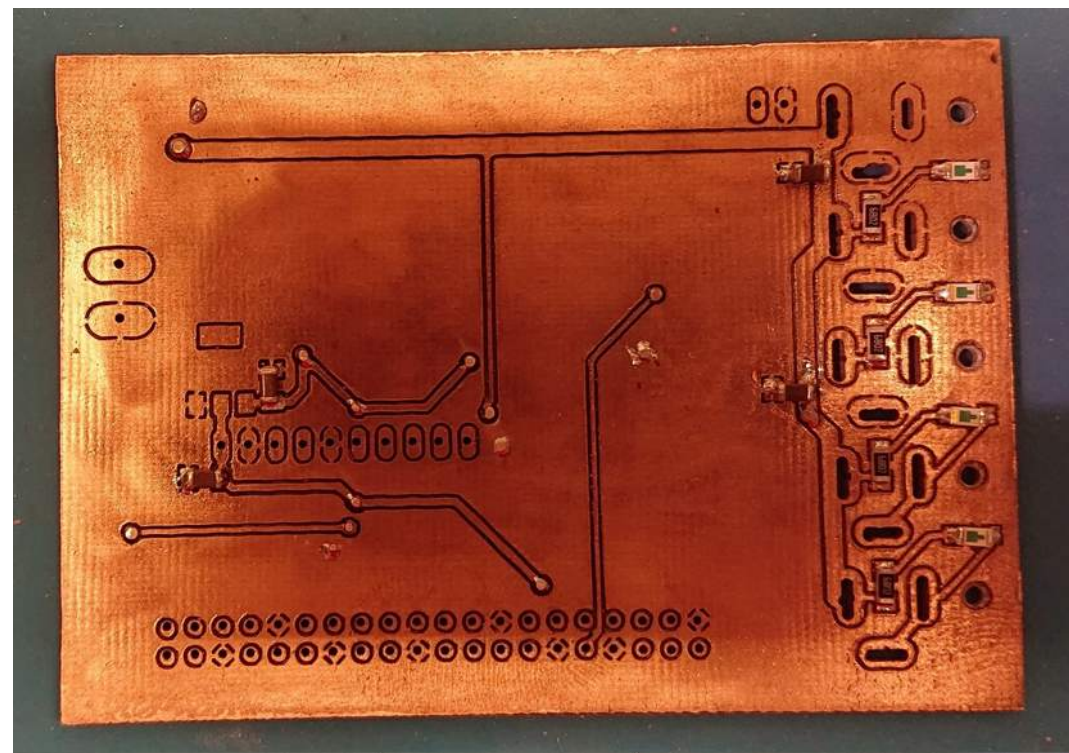
Links unten
„Hochzeit“
Endplatine
&
Gehäuse

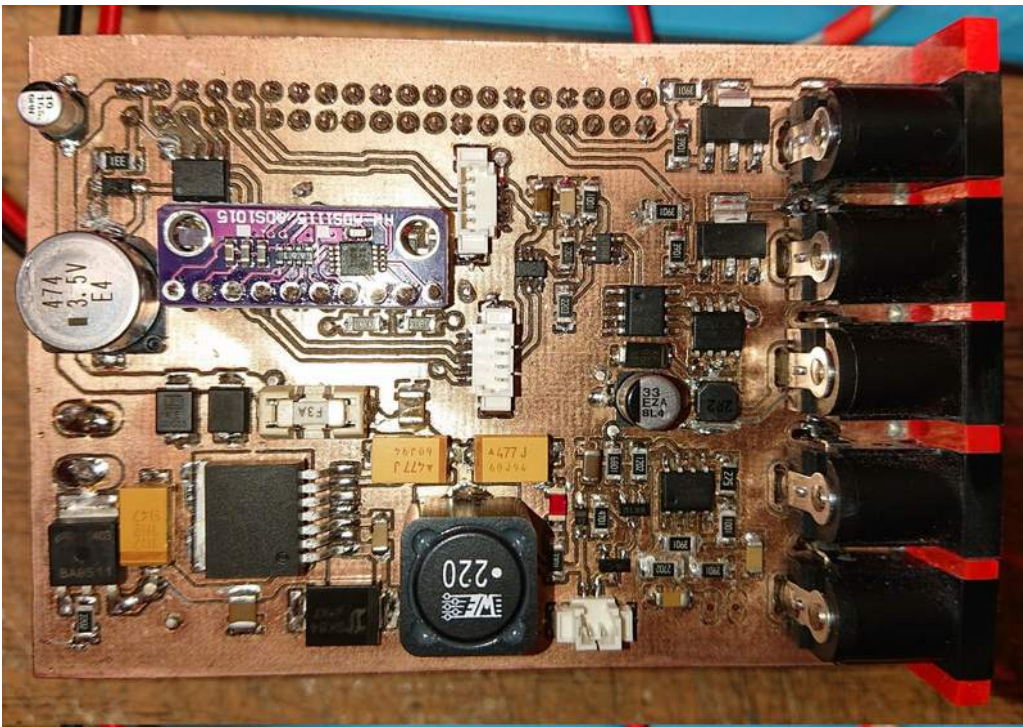




Astrorasp4 Version2 Aufsatzplatine Endversion

Bestückung + Test mit Prototyp Flatfieldversorgung (links oben)
Mit MCP4725 und LTC6992CS6-1

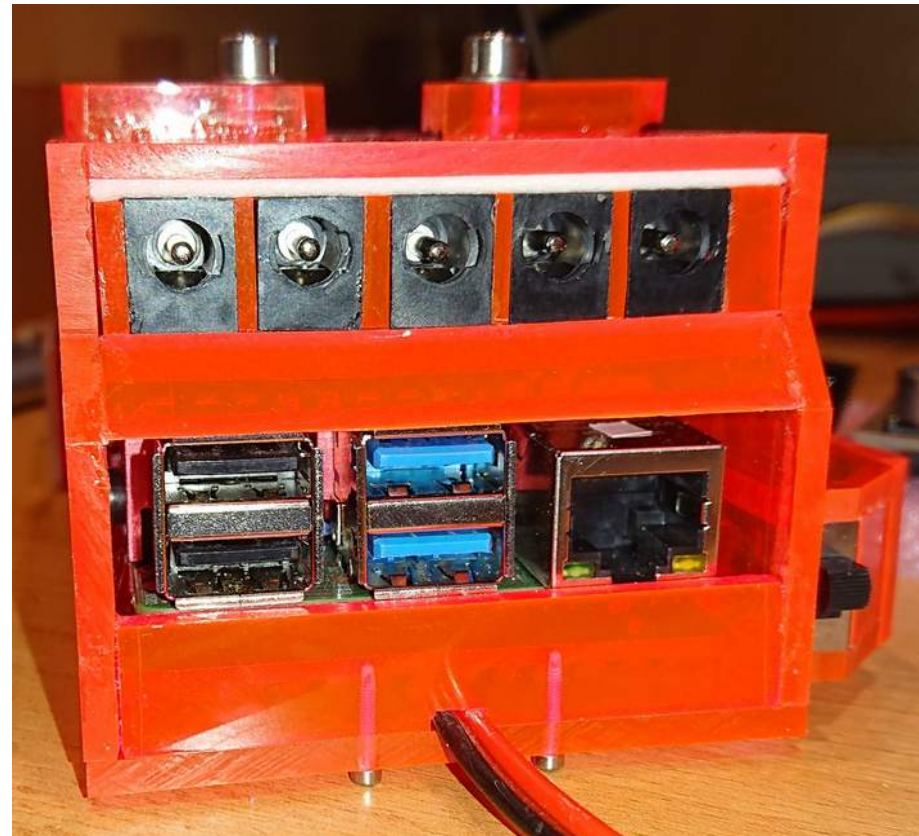
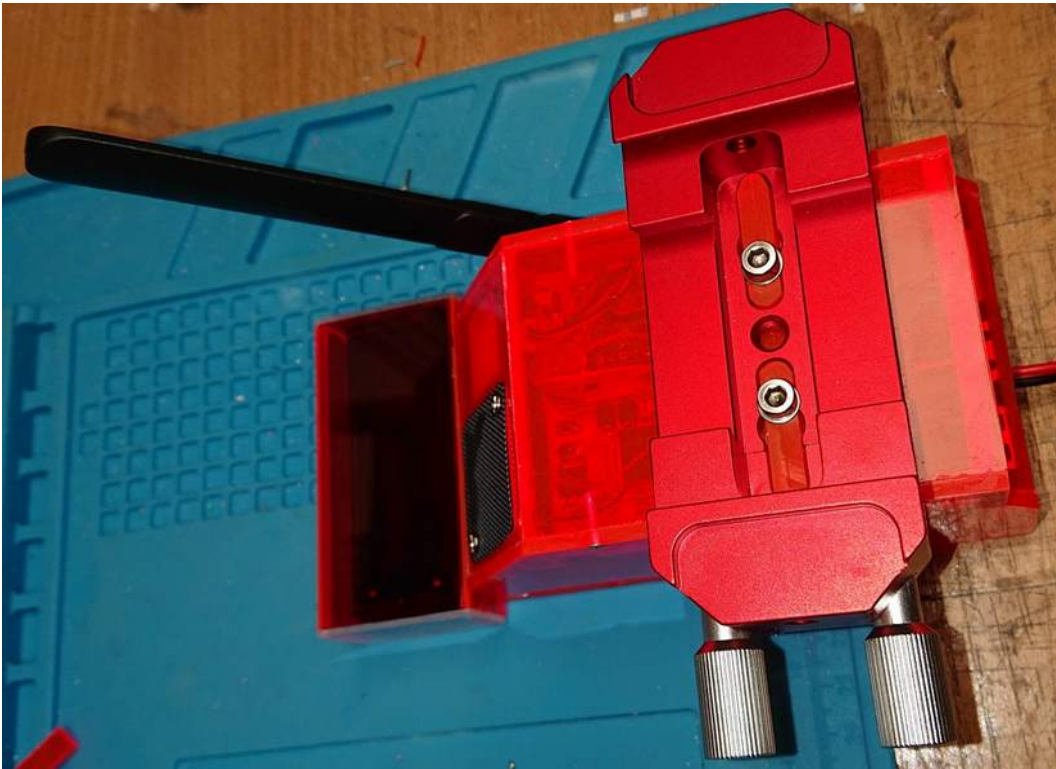


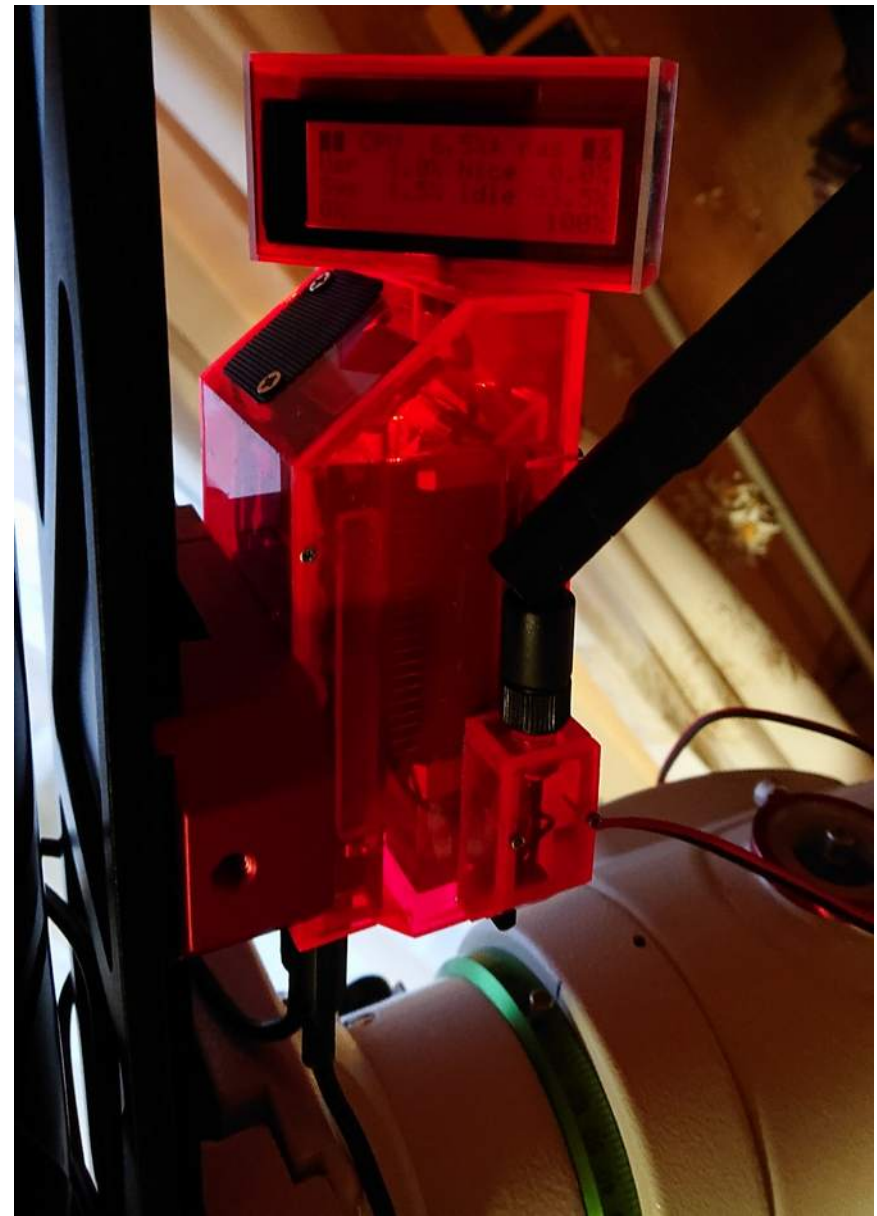


Astrorasp4 Version2

Finale Phase

Inkl. Prismenklemme (unten links)





Astrorasp4 Version2
Am Teleskop